



ST. MARY PARISH • WINNECONNE, WISCONSIN

**GATHER**  **GROW**  
*and*  
**OUR FUTURE IS NOW!**  
CAPITAL CAMPAIGN

**Dear Parishioners,**

We are excited about our **Gather and Grow Campaign** because our future is now!

At Saint Mary Parish we are a community where everyone is welcome. Within our parish, we experience the presence of the Holy Spirit guiding us to discover Jesus, follow Jesus, worship Jesus, and share Jesus.

To continue to build up our parish community, we propose to build a modern multi-purpose parish center. This new parish center will be an inviting and welcoming place to meet and greet each other as we share in the common mission of Christ. It will allow us to get to know more people and share in fellowship events. It's a place to showcase the wonderful work our parishioners are doing in stewardship, mission, outreach and adult faith projects.

The parish center can be used as a resting place for families during funeral visitation. This space will be used when Kaudy Hall is booked allowing for many more events and activities to take place. In the last year and a half, we have had over 266 activities in Kaudy Hall.

The **Gather and Grow Campaign** will address our future needs by creating a unified office space for our awesome staff and a house for a future resident priest. Please support this campaign with your prayers, time, and treasure. We invite you to get involved in whatever way you can.

God has great plans for our Saint Mary Parish Community. We invite you to pray to know your part in God's grand design. We ask each parishioner in this critical time to begin praying daily: Lord, what do You want to do - through me - for my parish.

With heartfelt gratitude and prayers,

*Deacon Paul Vidmar Victoria A. Holt Tim Johnson*  
*Gary M. Scheidegger Sherrie Johnson*

**CHAIRPERSONS**



**Deacon Paul Vidmar**  
Pastoral Coordinator



**Vicky Holt**



**Gary Scheidegger**



**Tim & Sherrie Johnson**



# OUR VISION

## OUR CHALLENGE

For the past 17 years, the need for a larger gathering space connected to the church, more offices, and meeting areas has been increasing. To prepare for the next 50 years, we need to:

- **Be prepared to provide a home** for a future priest.  
The current offices are in the former rectory. In the future, we will need a building for our staff offices.
- **Provide a welcoming space** for people to gather and share as we continue to grow as a community of faith.
- **Attract new members** to join our parish.
- **Demonstrate to the Bishop** and Diocese the vitality of St. Mary Winneconne as a future Catholic center and hub for Catholic activity in our area.
- **Replace** the over-crowded offices with adequate office and meeting spaces that will provide confidentiality.

## OUR SOLUTION

To continue to build up our parish community and the Kingdom of God in the Winneconne area, we propose a multi-purpose parish center with a gathering space, offices, conference room and connecting hallway to Kaudy Hall to address our present and future needs.

## OUR FINANCIAL PLAN

We will achieve our goal through the **Gather and Grow Campaign**.

The Parish Center will include a:

- **1,000 square foot Gathering Space**
  - **New Offices and Meeting Rooms**
  - **Connecting Hallway to Kaudy Hall**
- |  |                     |
|--|---------------------|
| • Cost of Project as of July 2024 .....                      | <b>\$3,100,000</b>  |
| • Amount in Pledges Diocese Requires to Begin Building ..... | <b>\$2,325,000</b>  |
| • Money pledged to Date .....                                | <b>\$700,000</b>    |
| • Campaign Goal .....  | <b>\$2,400,000+</b> |



# FREQUENTLY ASKED QUESTIONS

## Q: Do we intend to take on debt to complete these projects?

**A:** We are approaching the capital campaign without planning for long-term debt, focusing instead on completing projects in a fiscally prudent manner. This approach will help us maintain and enhance the parish's financial stability.

## Q: What will we be asked to consider through the Gather and Grow Campaign?

**A:** For now, we ask you to appreciate your parish and its history, think of the generosity of your parents, grandparents and past parishioners, learn about our vision and needs, and pray that God will show you how you can be involved through generously sharing the gifts He has given you.

## Q: How will the funds be collected?

**A:** We offer a range of options for making pledge payments, including bank EFT, checks, donations of stocks or bonds, and more. This flexibility is designed to make it easy for parishioners to contribute to the **Gather and Grow Campaign**. One hundred percent of all funds will be for the Parish Center.

## Q: When will pledging begin for the whole parish?

**A: The parish will begin pledging on November 9 & 10.** We will enter a "season of giving or pledging." A season of pledging allows us to consider everyone's differing circumstances and plans. A few weeks from now, you will receive a pledge packet. With that pledge packet, you will be asked to consider a gift or a pledge that is a reach and a sacrifice for you.

## Q: How can we donate to the capital campaign?

**A: The parish will begin pledging on November 9 & 10.** As we embark on this capital campaign, we invite you to consider how to respond to God's many blessings prayerfully. Your pledge is a special commitment, meant to be over and above your regular giving to our parish. You may choose to give through:

- One-Time Gifts
- Combination Gifts
- Pledges with a Down Payment
- Three-Year Pledges
- Bequests
- Stocks, Bonds or Other Assets

## Q: Can I also consider an estate gift?

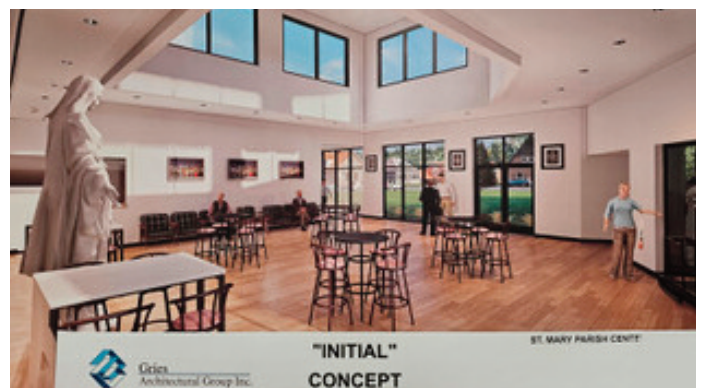
**A:** Yes, you can. An estate gift is a great way to bless St. Mary's mission and ministry today and in the future. A checkbox will be on your commitment card to request estate planning information or indicate an estate gift.

## Q: Can I consider a gift of stock or securities?

**A:** Parishioners of all ages are encouraged to consider making gifts of stock or securities to support our parish. For those ages seventy and a half or older, this giving offers unique benefits: **1)** It allows you to make a meaningful contribution without paying capital gains tax and **2)** It enables the parish to receive a potentially larger gift. This is a wonderful way for everyone to benefit—both you and our parish community!



Rendering of the western front of the Parish Center



Rendering of the new Gathering Space



# CONSIDERING YOUR GIFT

**God is calling us to do great things at St. Mary. Prayerfully consider the following:**

All of us have been blessed differently; all of us will give differently. We believe in equal sacrifice, not in equal gifts. We are all called to sacrifice equally! To start thinking about your sacrificial gift, please do the following:

- 1. Find a 3-year gift that is manageable to you.**
- 2. Consider praying, reaching, striving, and trying to go one or two levels higher:** from the more comfortable level to the more sacrificial level, from the more comfortable gift to the more sacrificial gift.
- 3. Pray daily to the Holy Spirit** to guide you in your decision.

## GIFT SCALE

Monthly	Yearly	3-Year Pledge
\$6,944	\$83,333	\$250,000
\$5,556	\$66,667	\$200,000
\$4,861	\$58,333	\$175,000
\$4,167	\$50,000	\$150,000
\$3,472	\$41,667	\$125,000
\$2,778	\$33,333	\$100,000
\$2,083	\$25,000	\$75,000
\$1,667	\$20,000	\$60,000
\$1,389	\$16,667	\$50,000
\$1,111	\$13,333	\$40,000
\$833	\$10,000	\$30,000
\$556	\$6,667	\$20,000
\$500	\$6,000	\$18,000
\$400	\$4,800	\$14,400
\$300	\$3,600	\$10,800
\$250	\$3,000	\$9,000
\$200	\$2,400	\$7,200
\$150	\$1,800	\$5,400
\$100	\$1,200	\$3,600
\$75	\$900	\$2,700
\$50	\$600	\$1,800
\$25	\$300	\$900

## CONSIDER AN ESTATE GIFT

A great way to continue the mission of Jesus at St. Mary is to consider an estate gift or bequest. An estate gift lets you consider your present needs while assisting in St. Mary's future.

### Here are some helpful ideas:

- **Make a will.** If you don't, the State of Wisconsin has a pre-determined will for you.
- **Think of St. Mary** as one of your family members.
- **Consider a residual.** Remember St. Mary through a residual of 5%, 10%, 20%, or more of your estate.
- **Consider your tax benefits.** Estate gifts can provide significant tax advantages. For example, a bequest is 100% deductible from your estate, potentially reducing estate taxes.

## CAMPAIGN DATES

### Kick-off & Information Weekends

September 28 & 29 and October 5 & 6

Information Packets will be mailed to each household

### Reflection Weekends

October 12 & 13 – Acknowledging God's Gifts

October 19 & 20 – Being Grateful

October 26 & 27 – Giving Back to God

November 2 & 3 – Giving Back to God, with Sacrifice!

### Commitment Season

November 9 & 10 – Major Commitment Weekend I

November 16 & 17 – Major Commitment Weekend II

November, December and January

– Commitment Weekends Continue

### Campaign Closing Celebration

Date to be determined